

PRE-INSTALLATION

Microsoft has a freely available version of SQL server called: Microsoft® SQL Server® 2008 R2 SP2 - Express Edition which can be downloaded from the link below

http:// www.microsoft.com/en-us/download/

Microsoft® SQL Server® 2008 R2 SP2 - Express Edition

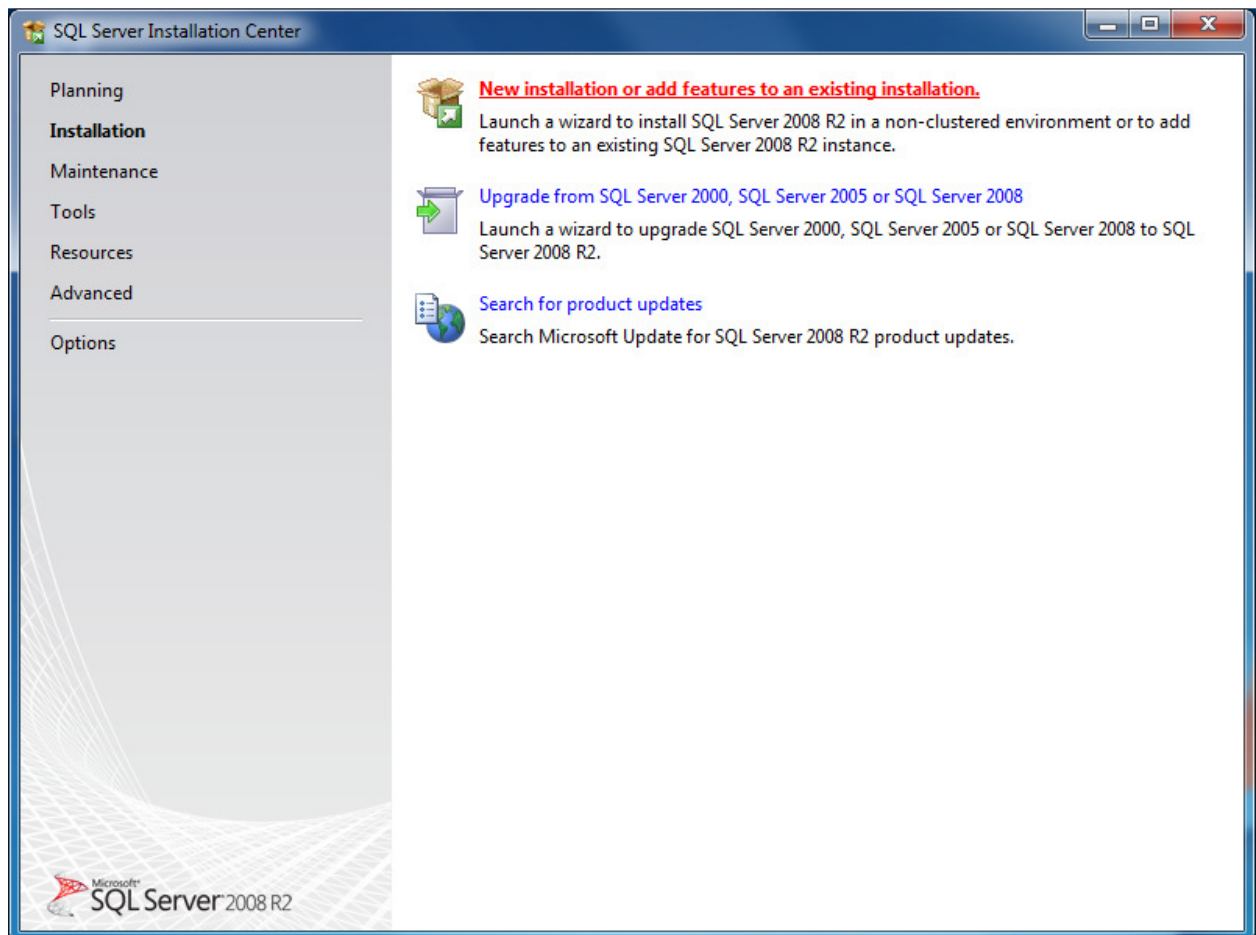
Release Date: 7/25/2012

Choose the appropriate 32 or 64 bit installer.

INSTALLATION

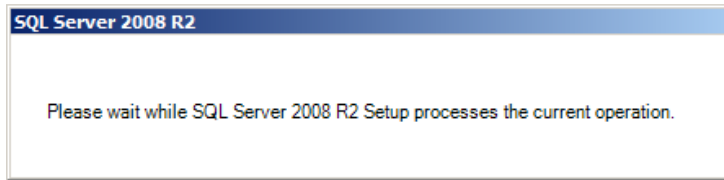
Double Click the install file that you have downloaded.

This will extract the required install files and present the following SQL Server Installation Center menu . For this procedure we are going to create a new SQL Server installation, so we will choose the top option, New installation or add features to an existing installation.



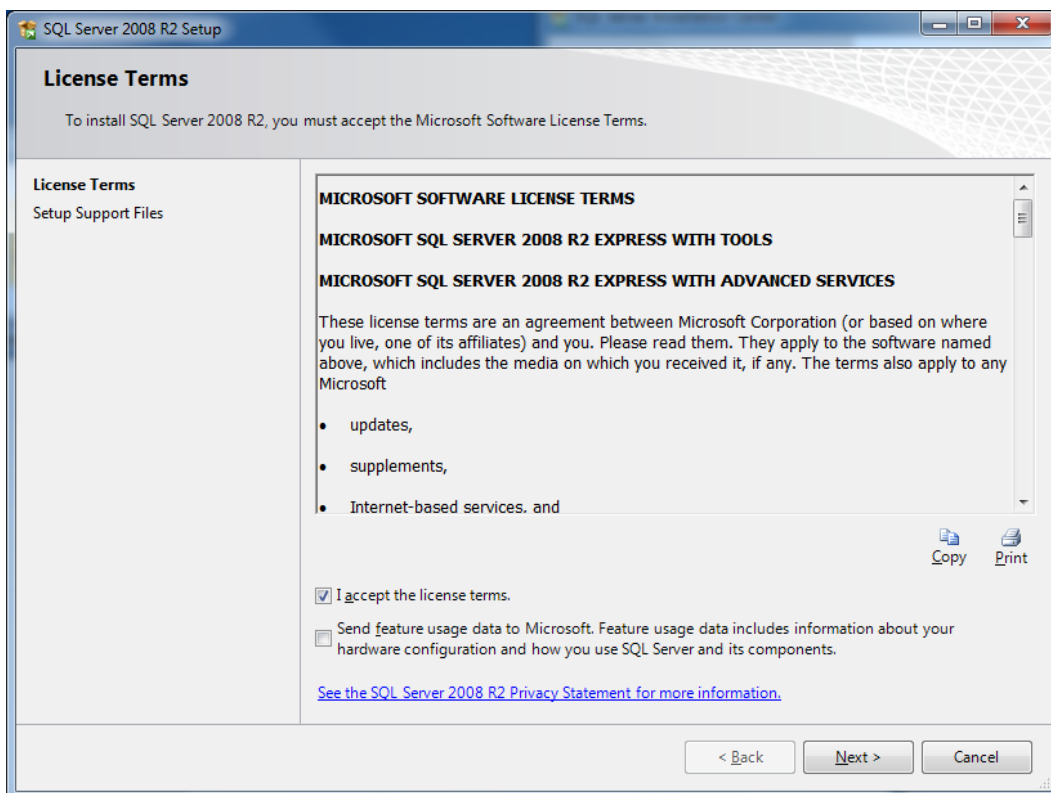
MS SQL SERVER 2008 R2 Installation

You will see the following screen now and at various points during the install, this is just telling you that the install is proceeding.



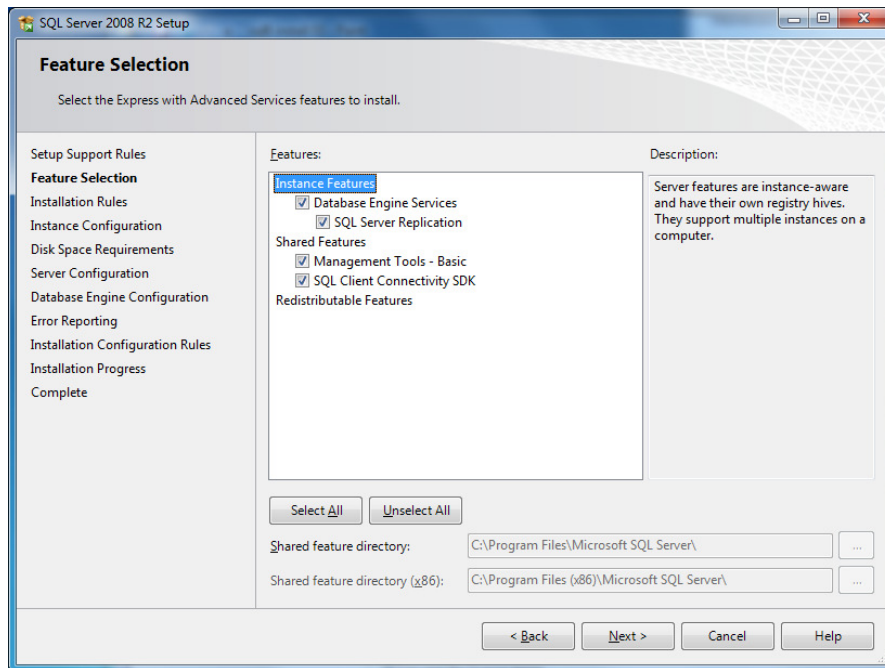
At this point you may be presented with a 'Rules Check' screen. If all of the Installation rules have been passed the installation will automatically proceed to the next stage, Licence Terms. If any of the rules fail, then you may have to take remedial action, see Microsoft website <http://msdn.microsoft.com/en-us/library/cc646015.aspx>

Next, you will be presented with the Licence Terms dialog box. Assuming that you accept the licence terms, click the 'I accept' tick box. You also have the option of sending usage data to Microsoft. Click Next to continue.



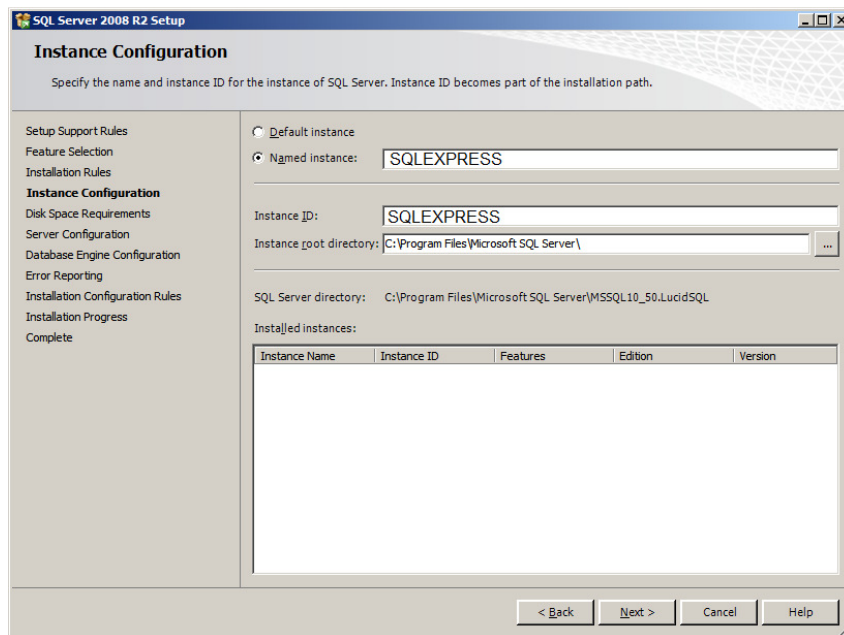
You will be presented with the Feature Selection dialog next. It is recommended that you install all of the features available in the Feature Selection screen. Select All and then the Next button to continue the install.

MS SQL SERVER 2008 R2 Installation



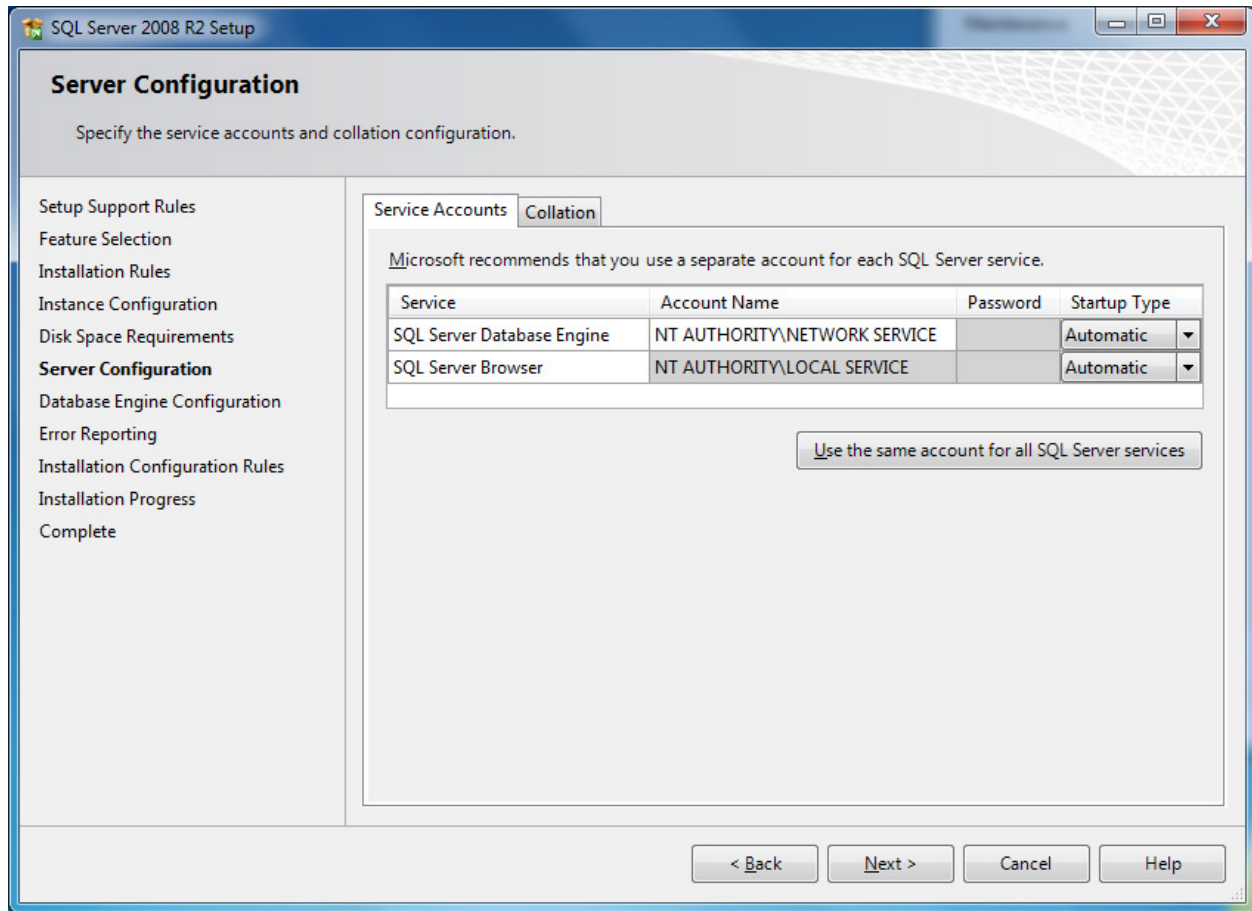
The next screen is the Instance Configuration dialog , where you can choose the name of your SQL Instance. We recommend keeping the default instance name of SQLEXPRESS .

Then click the Next button to continue.



MS SQL SERVER 2008 R2 Installation

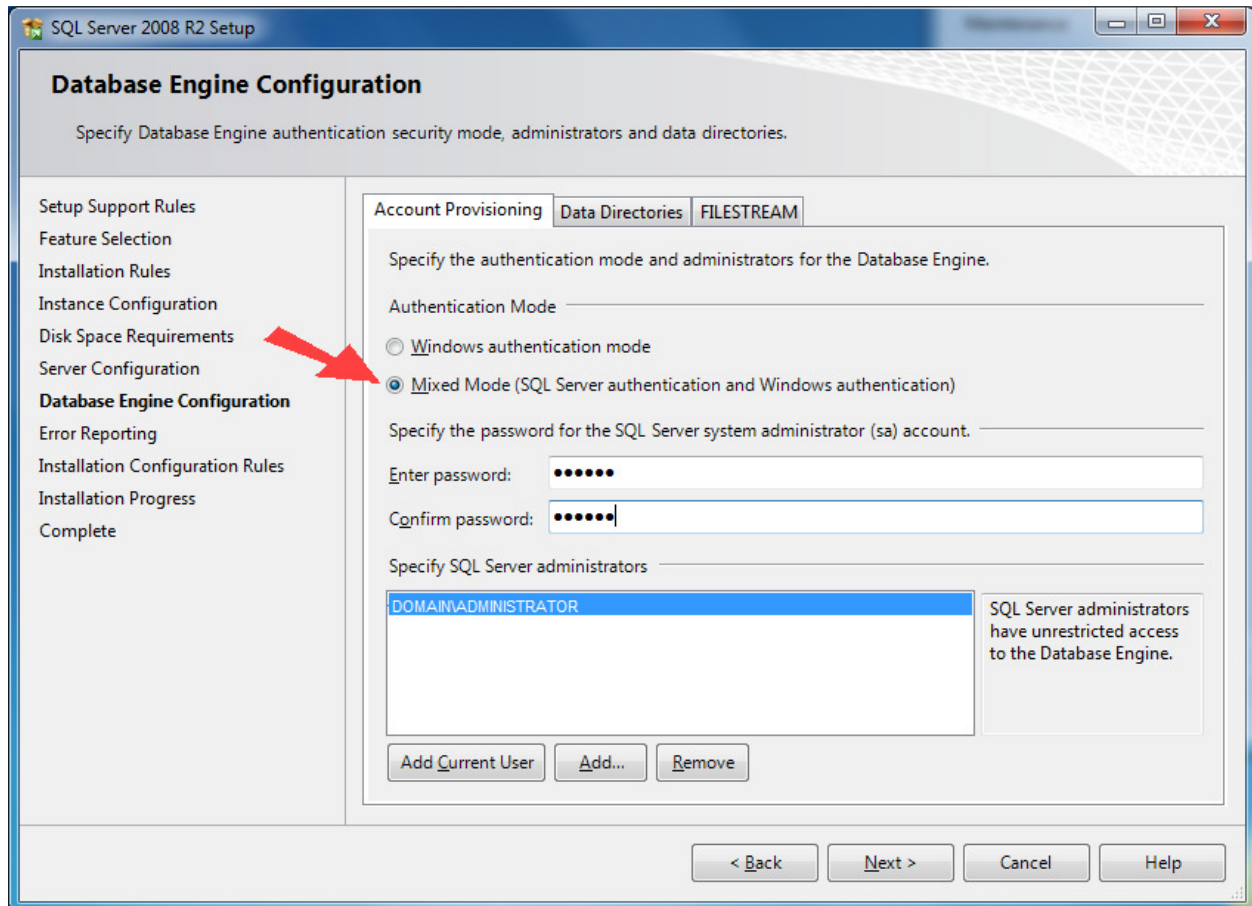
Next is the Server Configuration screen.



There are two services required by SQL Server to run on your server. The first of these is called SQL Server Database Engine, which, by default, is set up to run on the Account: NT AUTHORITY\NETWORK SERVICE. The second service is the SQL Server Browser. This service communicates across the network to let other computers know that the SQL Server instance is up and running. This runs under the Local Service account by default.

The SQL Server Browser Service Startup Type is disabled by default, change this to Automatic.

The next stage is Database Engine Configuration where you can choose the Authentication Mode for SQL Server users.



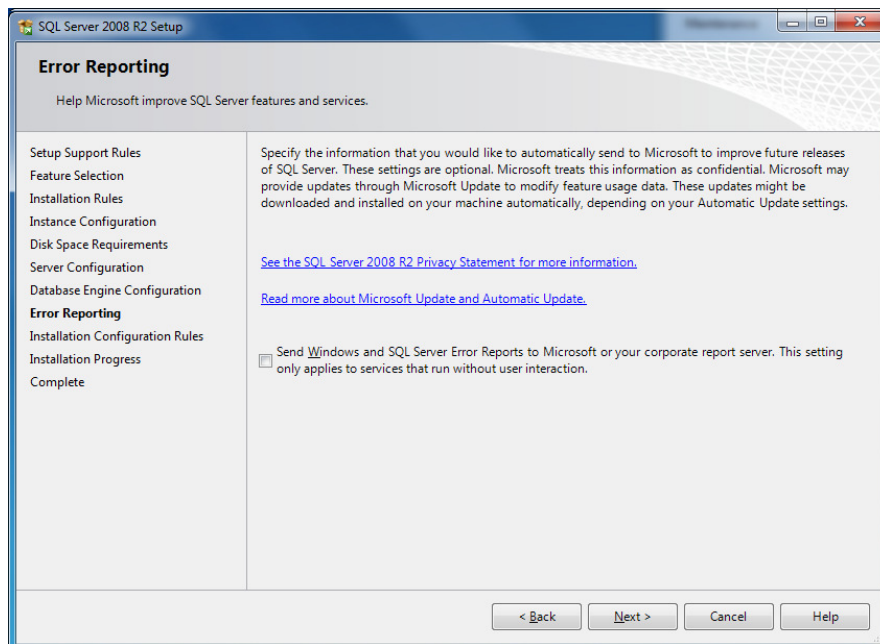
Mixed Mode, so it is important to click on the radio button adjacent to this option (see Figure 8). To complete this panel, please choose a strong password for the System administrator (sa) account for this SQL Server and enter it on the screen. This password you've just created will be needed again later to properly setup or restore databases.

If you now want to add other users to the list of System administrators you can do this on the same screen .

Click Next to continue.

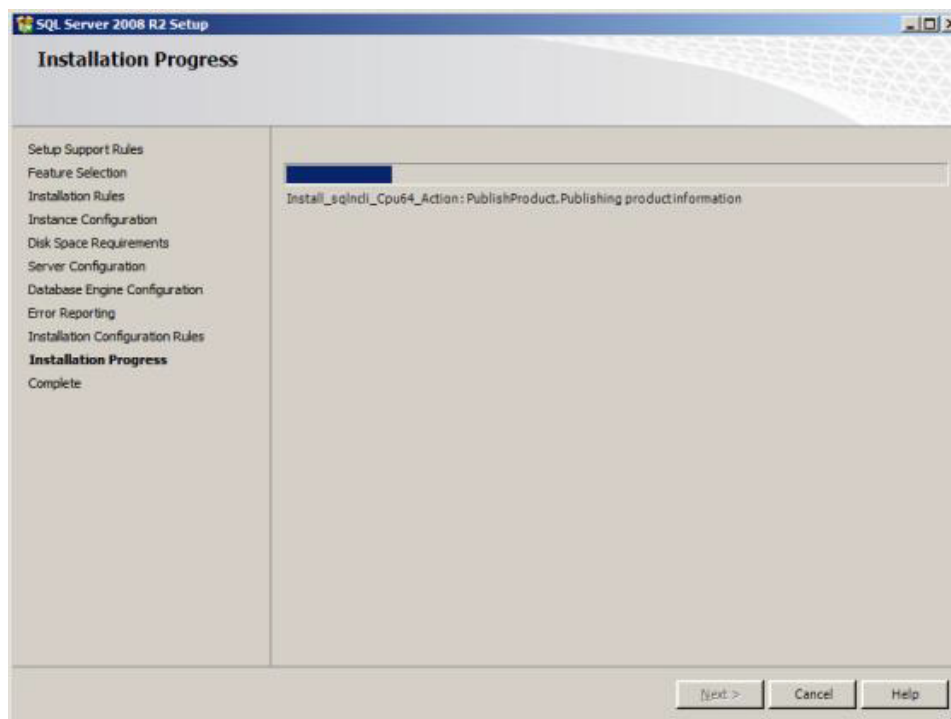
MS SQL SERVER 2008 R2 Installation

At the next screen Error Reporting you can learn more about how you can maintain and update your SQL Server in the future. There is also a tick box which will allow you to send Windows and SQL Server error reports to Microsoft.



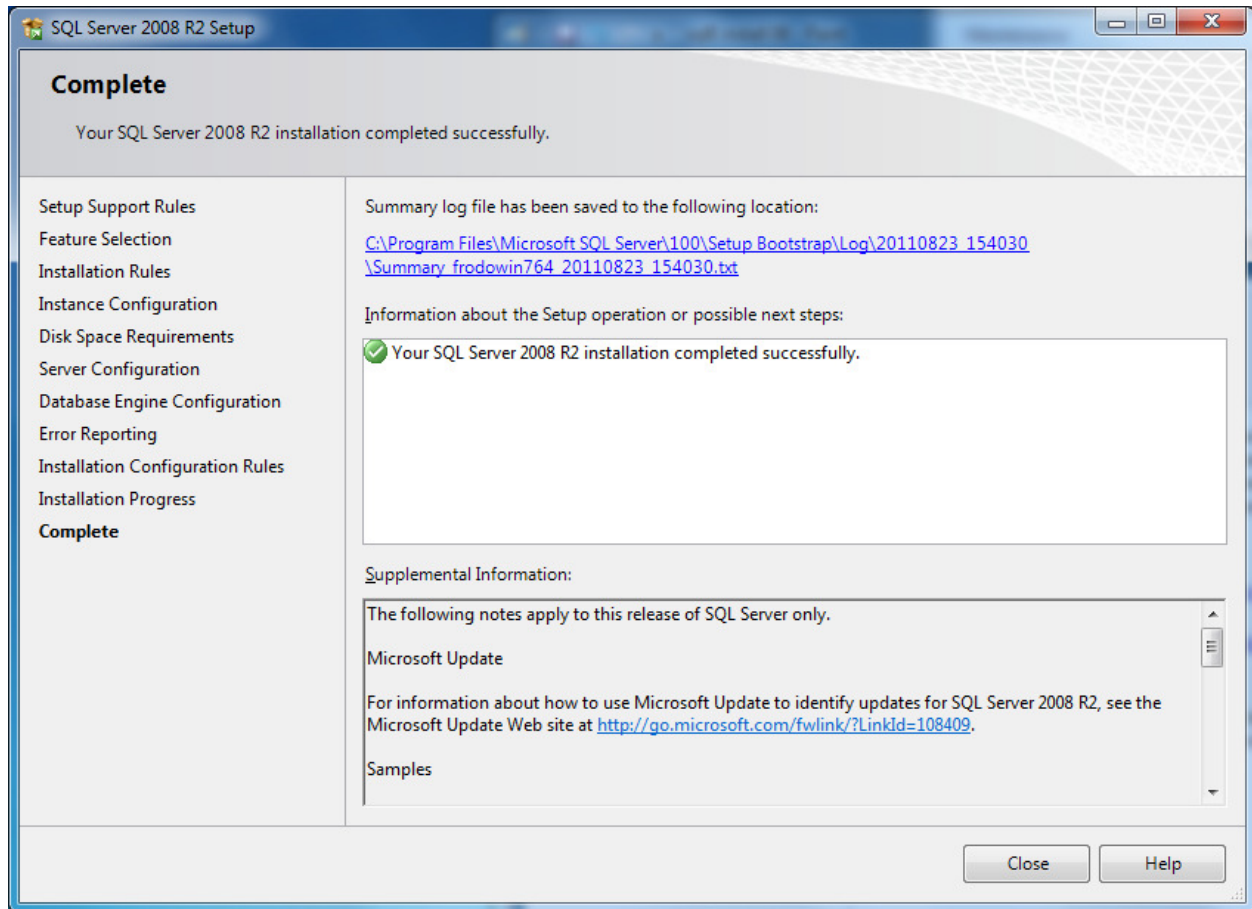
Click Next to continue.

The installation will now copy and install various files. You will be presented with the Installation Progress screen.



MS SQL SERVER 2008 R2 Installation

You will then be presented with the Installation Complete window.

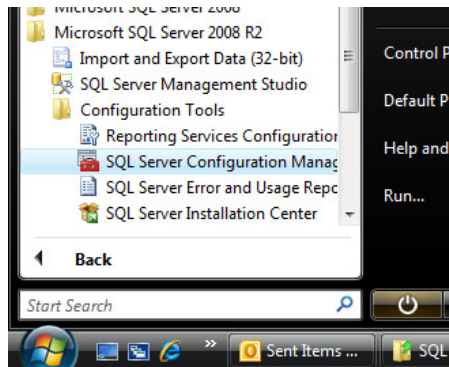


You are now at the end of the installation. In the figure you can see there is a web link to useful information for Updates. The base install of SQL Server is now complete, so you can click on the Close button.

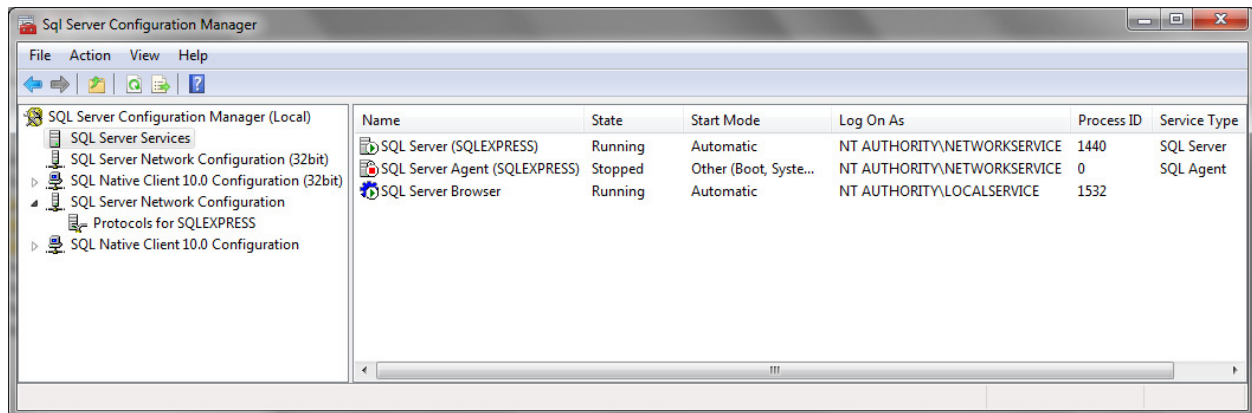
CONFIGURING THE DATABASE ENGINE

SQL Server Configuration Manager

This tool is installed onto the computer's All Programs menu and is used to enable SQL services and protocols. Find it from the Programs listing under the group called Microsoft SQL Server 2008 R2.



Having launched the tool you will see the two services: SQL Server and SQL Server Browser need to be enabled and to be running.

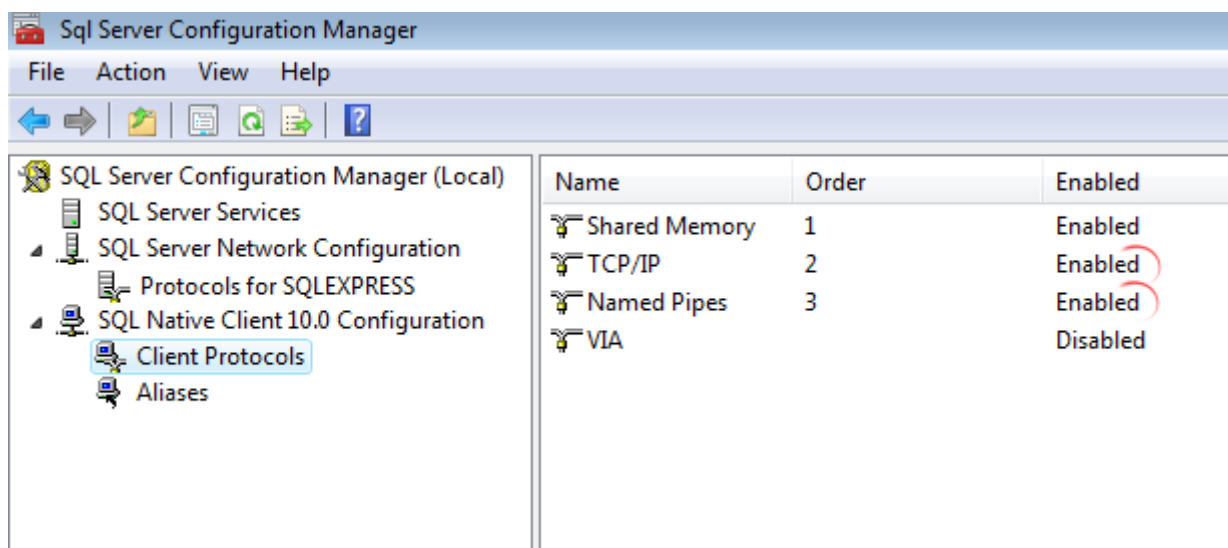
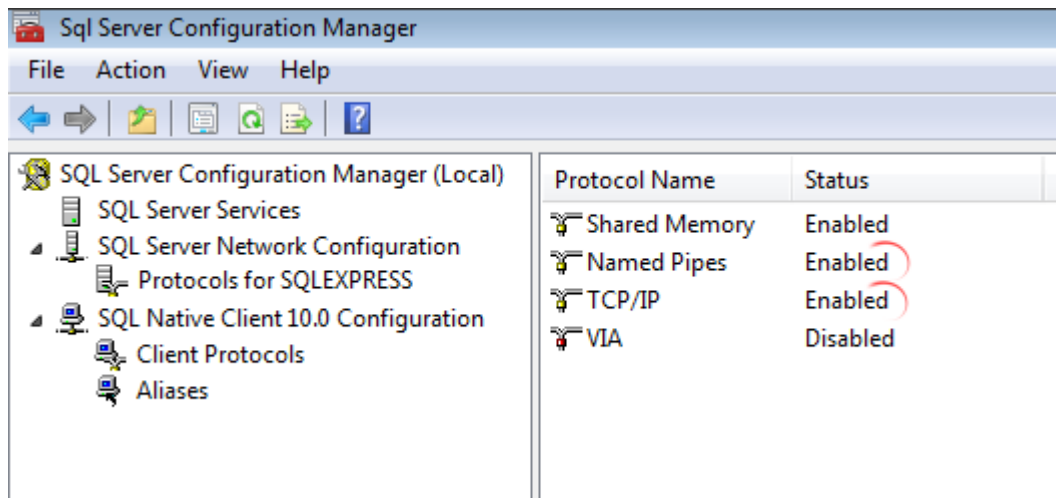


If you first look at the settings for SQL Server 2008 Services, both the SQL Server Browser and the SQL Server services for the database instance are not enabled by default after installation.

They can be started or stopped or otherwise configured by right-mouse clicking over them. The figure shows that both services have been configured to run automatically when the computer is started.

To Stop, Start or Restart a service, right mouse click on the item under the column header 'State' and use the context menu which appears to Stop, Start or Restart the service.

Next, check that the protocols are enabled. It is recommended that you enable TCP/IP and Named Pipes for both the SQL Server instance) and the SQL Native Client 10.0. Note: If you have installed SQL Server 64 bit edition, there will be two SQL Native Clients installed, a 32 bit and the default 64 bit.



After changing the protocols, restart both SQL Server and SQL Server Browser services as explained above.

Finally, you will need to make some changes to your firewall to allow SQL Server to communicate with client machines, see Microsoft page <http://msdn.microsoft.com/en-us/library/ms175043.aspx> for further information on making firewall rule-set modifications.